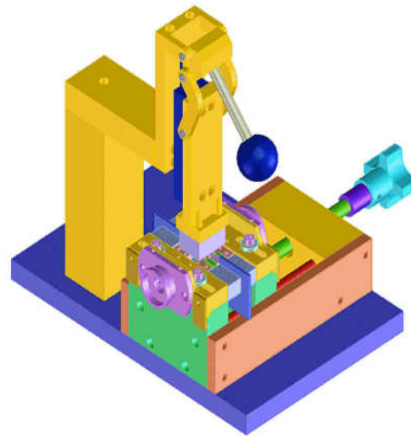




Product Note: B6140033

User Manual for Test Fixture A0134552A



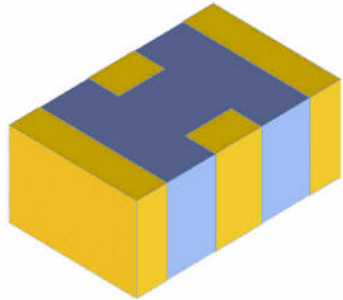
Serving the Microwave Industry since 1985

Solution Partner with Maury Microwave



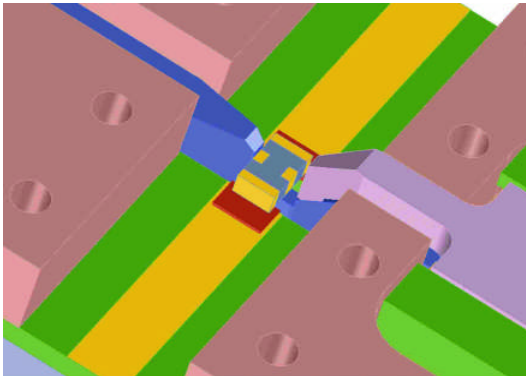
6849 W Frye Rd, Chandler, AZ 85226 USA
Tel: (480) 940-0740 Fax: (480) 961-4754
E-mail: sales@icmicrowave.com Website: www.icmicrowave.com

Test Fixture Operation and Calibration

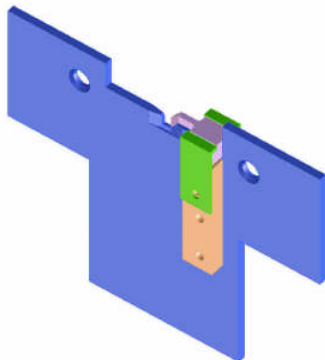


The test fixture A0134552A is designed for testing four terminal devices in an 0805 Package. The fixture is designed to operate over a frequency range of DC-3 GHz at room temperature.

This manual will go over the general operation and use of the test fixture.

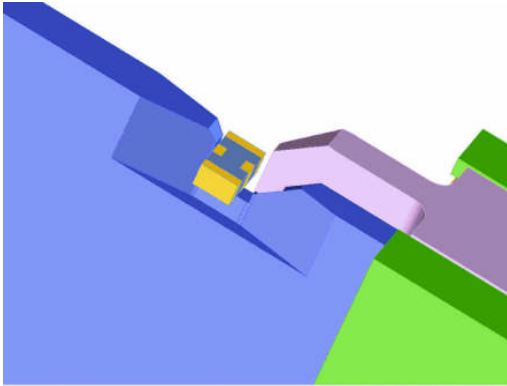


For testing, the DUT is placed onto two microstrip launches with DURA contacts.

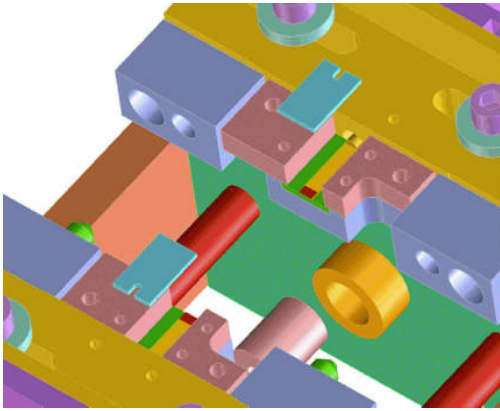


A midsection is inserted into the test fixture. The size of the midsection determines the size of the DUT to be tested. The midsection assembly has two guide holes for alignment with the test fixture. The chamfered side of the alignment holes is on the input side of the test fixture on all midsections.

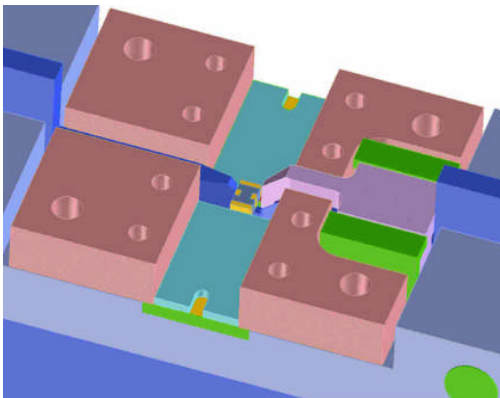
See our website www.icmicrowave.com for more details



The midsection has a fixed and a movable ground contact. The movable ground contact slides down a 45 degree ramp. As it slides down, it moves toward the DUT and makes ground contact. The brass push pin of the pusher assembly pushes the movable ground contact onto the midsection. The movable ground contact is automatically retracted when the brass push pin moves up.



Two DUT guides help place the DUT evenly onto the RF contacts (DUT guides are shown in blue).



DUT guides shown in place with the DUT and the midsection. The DUT guides are removed during calibration.

Inter-Continental Microwave

6849 W Frye Rd, Chandler, AZ 85226 USA
Tel: (480) 940-0740 Fax: (480) 961-4754
E-mail: sales@icmicrowave.com Website: www.icmicrowave.com